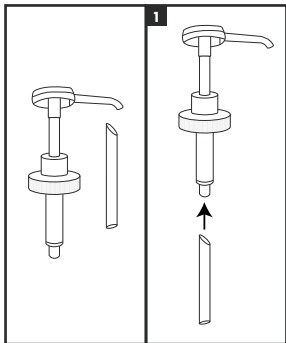


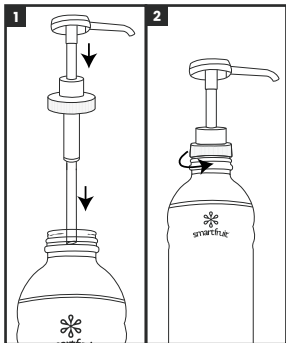
Smartfruit Pump Assembly & Care Guide



How to Assemble:

When you receive your Smartfruit pump, it comes in two pieces: the pump and the dip tube.

1. Connect the dip tube to the pump.



How to Use Your Pump:

When opening a brand new Smartfruit bottle, keep in mind it's filled all the way to the top, so you'll want to insert the pump carefully to avoid any spillage.

1. Press down on the pump as you insert it into the bottle to create suction in the dip tube.
2. Screw on the locking collar.

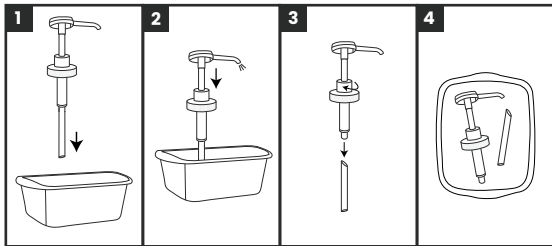
Fun Fact: One full pump equals one ounce of product.

Smartfruit Pump Assembly & Care Guide



How to Clean Your Pump:

1. Place the pump into a container of hot water.
2. Pump the hot water through the pump until all juice residue has been extracted.
3. Remove dip tube and unscrew locking collar to disassemble pump.
4. Clean all parts with hot water and dish soap and rinse completely with warm, clean water.
5. Sanitize all parts according to local sanitation requirements.
6. Air dry parts completely before assembling for use.



**Clean, rinse, sanitize, and dry parts at a minimum of every 24 hours.*



Scan QR Code
to Watch the Tutorial